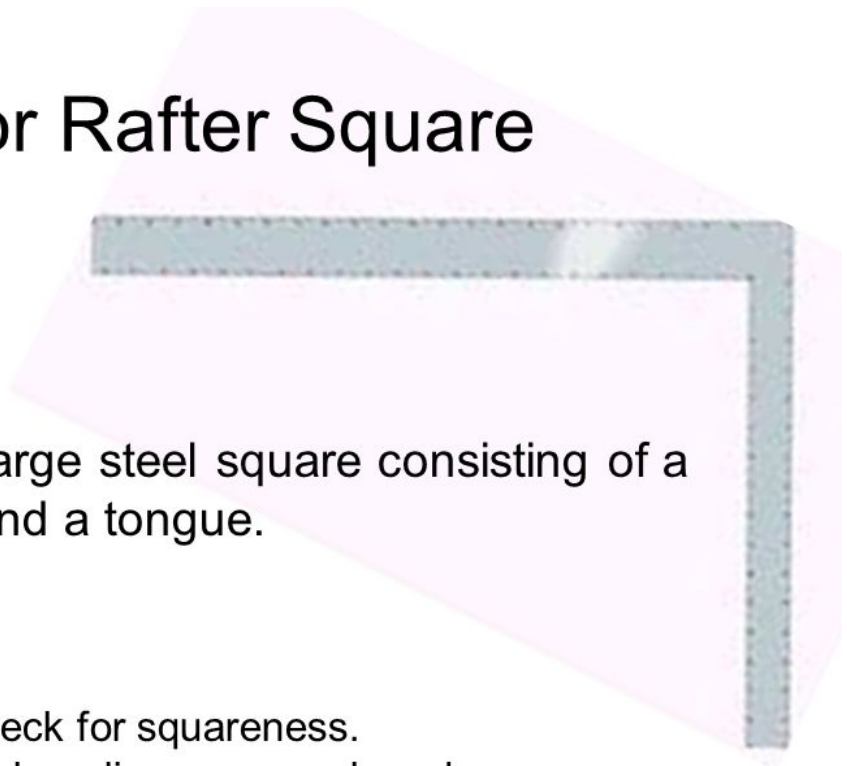


Framing or Rafter Square



Description: A large steel square consisting of a blade, or body, and a tongue.

Uses:

- To check for squareness.
- To make a line across a board.
- To lay out rafters and stairs.

SHOP TOOL IDENTIFICATION

B. Engine and Machinery Hand Tools



1. Adjustable Joint Pliers



2. Mallet or Soft Face Hammer



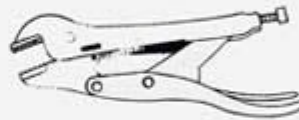
3. Battery Pliers



4. Combination Slip joint Pliers



5. Curved Needle Nose Pliers



6. Locking Pliers



7. Adjustable End Wrench



8. Hex Key Wrench



9. Needle Nose Pliers



10. Snap Ring Pliers

17



Name: drill press

Uses: _____

18



Name: diagonal pliers

Uses: _____

19



Name: electric drill

Uses: _____

20



Name: power saw

Uses: _____

21



Name: pliers

Uses: _____

22



Name: slip pliers

Uses: _____

23



Name: vice grip

Uses: _____

24



Name: wrench

Uses: _____

25



Name: quick grip clamp

Uses: _____

26



Name: C-clamp

Uses: _____

27



Name: ball peen hammer

Uses: _____

28



Name: mallet

Uses: _____

29



Name: hacksaw

Uses: _____

30



Name: tin snips

Uses: _____

31



Name: tape measure

Uses: _____

32



Name: safety goggles

Uses: _____



250g Claw ha



18mm art knife



turnscrew



allen wrench



205mm kitchen scissors



3m tape



slip-joint pliers



25mm SCREWDRIVER BIT



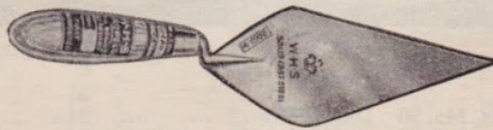
BRICKLAYERS' TOOLS

Item

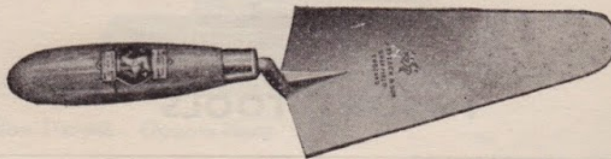


297 Brick Trowels				10	11	12	ins.
No. 2030. "Brades" London Trowels	20/-	20/6	21/-	each
No. 2031. " " " Capped	20/6	21/-	21/6	"
No. 2018. Laying-on Trowel	24/-	25/-	26/-	"

(Left Handed Trowels obtainable to Special Order)



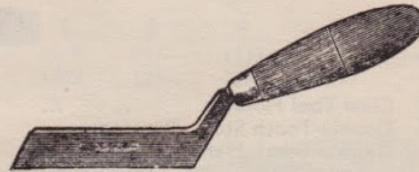
298 Pointing Trowels				5	6	7	ins.
No. 2061.	9/3	9/6	9/9	each



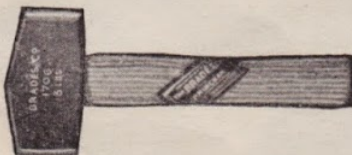
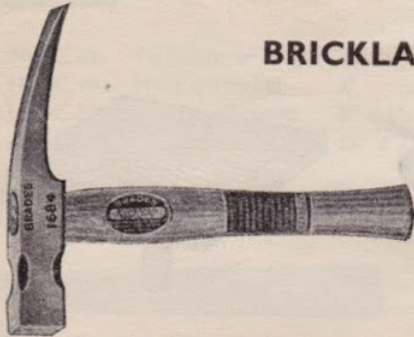
299 Gauging Trowels				6	7	8	ins.
C.48.	11/3	11/9	12/3	each



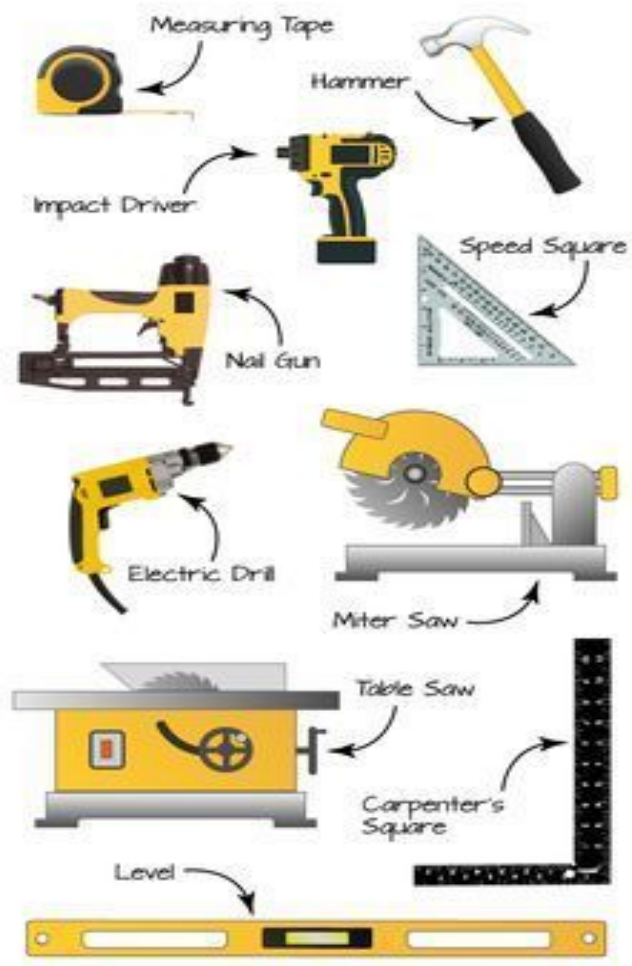
300	Bright Forged Line Pins.	6" pointed	...	6/-	pair	
301	" " " "	6" round	...	6/-	"	
		$\frac{1}{4}$	$\frac{1}{8}$		ins.	
302	Jointers, Grooved	11/-	11/-	each
303	" Square	9/-	9/-	"



BRICKLAYERS' HAMMERS



306	No. 1684.	Short Pattern Brick, all bright	17/7	each
307	No. 1711.	12 $\frac{1}{2}$ " Head Brick	18/9	"
308	No. 1703.	Scutch Hammer	16/9	"
309	No. 1704.	Double Scutch Hammer	19/9	"
310	No. 1686.	Mortar Pick	16/6	"
311	No. 1706.	2 $\frac{1}{2}$ -lb. Club Hammer	12/8	"
312	No. 1706.	4-lb. " "	14/10	"
820	Brick Bolster	No. 2237/4"	8/9	"



STANLEY HAND TOOLS

SHARP SHOOTER-MULTI PURPOSE



TR45

MANUAL STAPLE GUN



TR150

XT HAMMER TACKER W/3 PCS BLADE



PHT350

SHARP SHOOTER -MULTI PURPOSE



95-053

STANLEY HAND TOOLS

DYNAGRIP WOOD CHISEL



16-273

CHISEL CONCRETE W/ GUARD



16-329

HAMMER CLAW F/GLASS



51-072

RUBBER MALLET



57-527

STANLEY HAND TOOLS

TRIPOD 369 FLASHLIGHT



95-1125

TRIPOD 369 FLASHLIGHT - CAMOUFLAGE



95-000

MAXLIFE 369 MINI TRIPOD FLASHLIGHT



95-004



A Backhoe is used for light excavation work.



Compaction Equipment.



Rammer

Pad-Foot Roller



Reversible Plate

Vibratory Plate



Ride-On
Vibratory Roller



Reciprocating Saw



Circular Saw



Jigsaw (\$20-\$80)



Circular Saw (\$40-\$100)



Miter Saw (\$150+)

Various Electric Power Saws



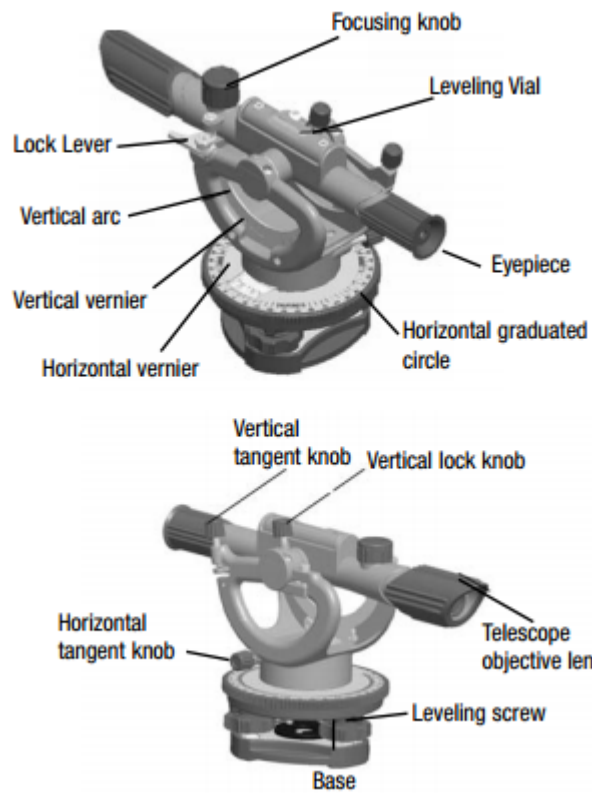
Wood Sanding Equipment.



Router Tool for Woodworking.



Ditch Digging Equipment



Transit Level



Portable Mortar Mixer



Portable Concrete Mixer



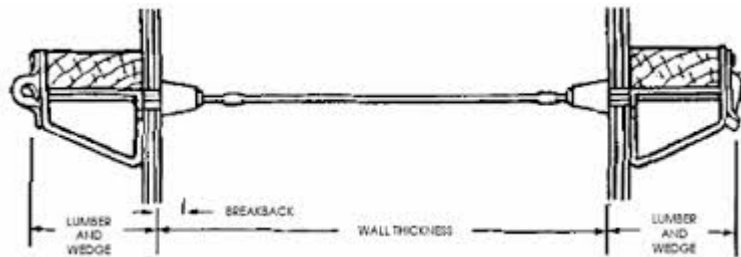
Walk Behind Power Trowel for Concrete Finishing.



Non-Pressurized Flexible Drain Pipe Joint Connector.



Silt Fence to Protect Against Soil Erosion.



Snap Tie Concrete Wall Form Connector.



Surveying Hubs for Benchmark Locations.



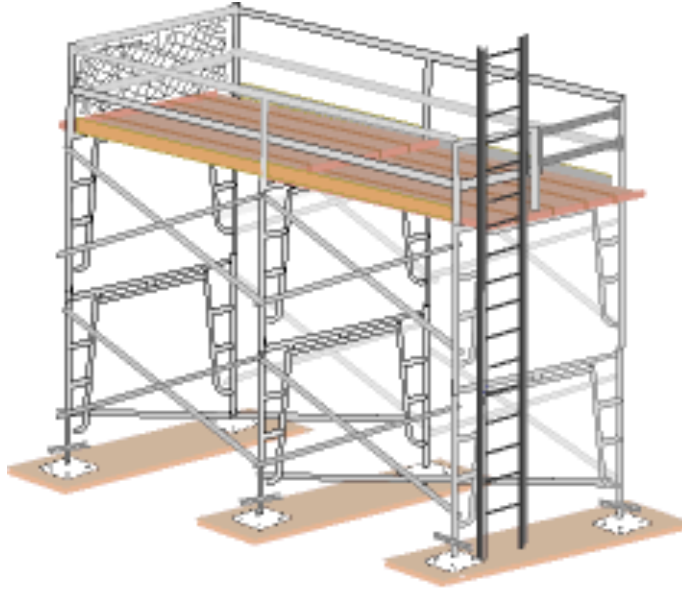
Various Turnbuckles



Fasteners to attach wood or metal to concrete.



Devices used to Lock Out Power Sources.



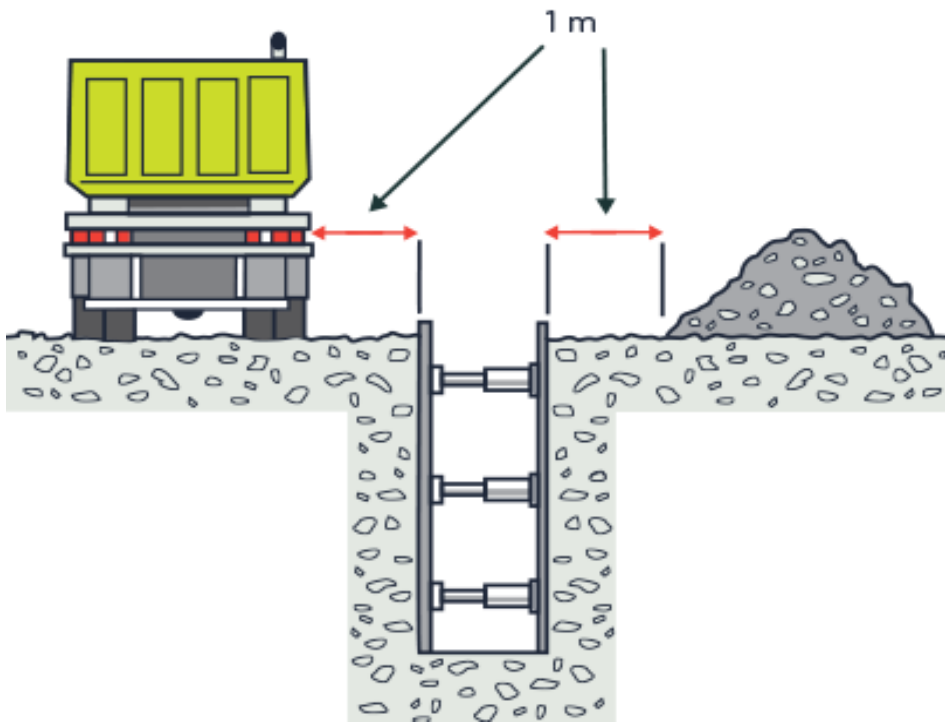
Scaffolds Require Guard Rails at 10 feet Elevation.

	<p>N7500-82 Acid Gases and Highly Toxic Particulates Filter/Cartridge (HEPA)</p>	<p>Chlorine, Hydrogen Chloride, Sulfur Dioxide or Hydrogen Fluoride or Formaldehyde; Dusts, Fumes, Mists, Radionuclides and Radon Daughters: Approved for respiratory protection against chlorine, hydrogen chloride, sulfur dioxide or hydrogen fluoride or formaldehyde; dusts, fumes and mists having a time-weighted average less than 0.05 milligram per cubic meter, and asbestos containing dusts and mists, radionuclides and radon daughters attached to these dusts fumes and mists.</p>
	<p>N7500-83 Organic Vapors, Acid Gases and Highly Toxic Particulates Filter/Cartridge (HEPA)</p>	<p>Organic Vapors, Chlorine, Hydrogen Chloride, Sulfur Dioxide or Hydrogen Fluoride or Chlorine Dioxide; Dusts, Fumes, Mists, Radionuclides, and Radon Daughters: Approved for respiratory protection against organic vapors, chlorine, sulfur dioxide or hydrogen fluoride or chlorine dioxide; dusts, fumes, mists and having a time-weighted average less than 0.05 milligram per cubic meter, and asbestos containing dusts and mists, radionuclides and radon daughters attached to these dusts, fumes and mists.</p>
	<p>N7500-84 Ammonia, Methylamine and Highly Toxic Particulates Filter/Cartridge (HEPA)</p>	<p>Ammonia, Methylamine, Dusts, Fumes, Mists Radionuclides, and Radon Daughters: Approved for respiratory protection against ammonia and methylamine, dusts, fumes and mists having a time-weighted average less than 0.05 milligram per cubic meter, and asbestos containing dusts and mists, radionuclides and radon daughters attached to these dusts, fumes and mists.</p>
	<p>N7500-85 Organic Vapors, or Formaldehyde and Highly Toxic Particulates Filter/Cartridge (HEPA)</p>	<p>Organic Vapors, or Formaldehyde; Dusts, Fumes Mists, Radionuclides, and Radon Daughters: Approved for respiratory protection against organic vapors, or formaldehyde; dusts, fumes and mists having a time-weighted average less than 0.05 milligram per cubic meter, and asbestos containing dusts and mists, radionuclides and radon daughters attached to these dusts, fumes and mists.</p>
	<p>9800-8 PAPR* Highly Toxic Particulates Filter (HEPA)</p>	<p>Dusts, Fumes, Mists, Radionuclides and Radon Daughters: * For use with PAPR only! Approved for respiratory protection against dusts, fumes and mists having a time-weighted average less than 0.05 milligram per cubic meter, asbestos containing dusts and mists, radionuclides and radon daughters attached to these dusts, fumes and mists. TC-21C-481</p>

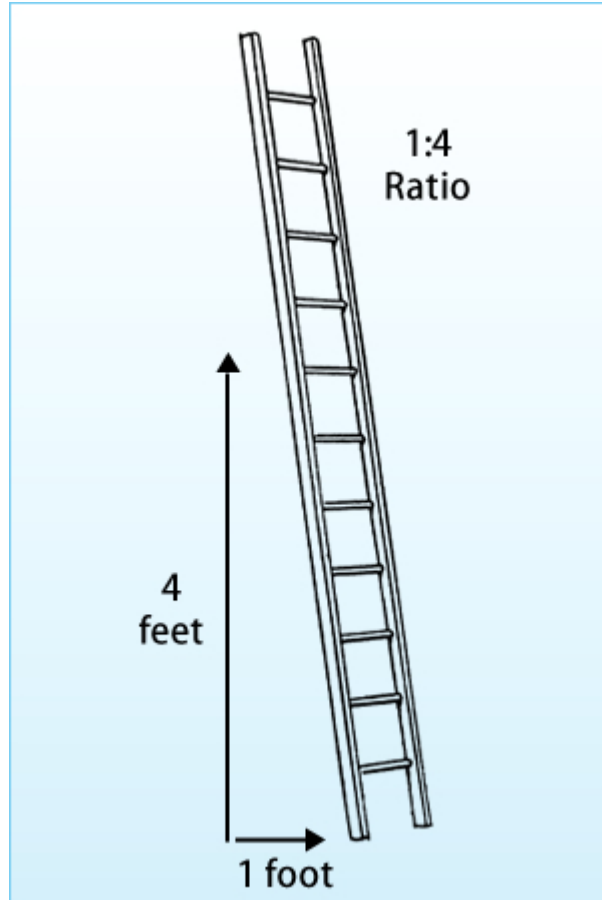
The Purple Color on these Filters Mean that they are 99.97% efficient for particles.

GROUNDING & BONDING WIRES

CREATE A SAFE GROUNDING CONNECTION FOR DISPENSING FLAMMABLE OR HOT COMBUSTIBLE LIQUIDS.



All Excavated Soils Must Be a Minimum of 2 Feet Away from The Trench.

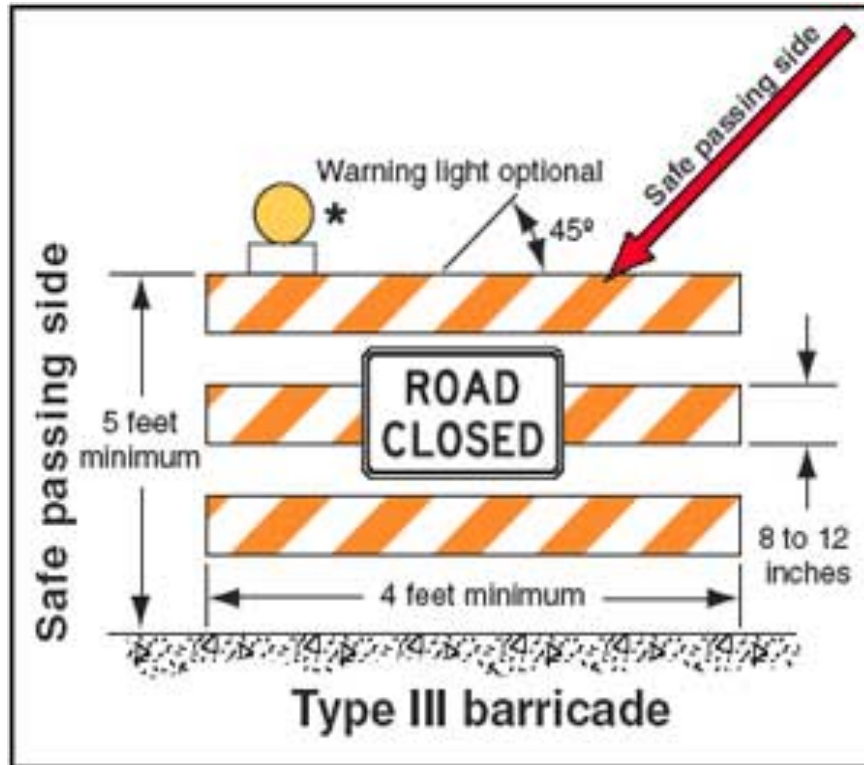


Portable Extension Ladders must be set-up with a 4:1 lean ratio.

Keep ladders and tools
10 FEET away from
power lines.



Classes Of Fires	Types Of Fires	Picture Symbol	Extinguisher
	Wood, paper, cloth, trash and other ordinary materials.		<ul style="list-style-type: none">  Water  Foam Spray  ABC Powder  Wet Chemical
	Gasoline, oil, paint and other flammable liquids		<ul style="list-style-type: none">  Foam Spray  ABC Powder  Carbon Dioxide
	May be used on fires involving live electrical equipment without danger to the operator		<ul style="list-style-type: none">  ABC Powder
	Combustible metals and combustible metal alloys		<ul style="list-style-type: none">  ABC Powder  Carbon Dioxide
	Cooking media (Vegetable or Animal Oils and Fats)		<ul style="list-style-type: none">  Wet Chemical



Note: The Safe Passing Side, Stripes Point Down Toward The Lane of Traffic.



Caution Tape Means That There is a Potential Health or Safety Hazard.

USEFUL MATH FORMULAS

Area = Length X Width

Volume = Length X Width X Height

FRACTIONS TO DECIMAL CONVERSIONS

$$\frac{1}{2} = .50$$

$$\frac{1}{4} = .25$$

$$\frac{3}{4} = .75$$

$$1 \text{ inch} = .08 \text{ Feet}$$

$$\frac{1}{8} \text{ inch} = .01 \text{ Feet}$$



Duplex, or double headed nails are used so they can be pulled from the lumber easier.



Wall Forms are Used to Place Concrete for vertical walls.



Inspect Extension Cords Prior to Use. No Grounding Pin, Do Not Use The Cord.